

Northwest Colorado Community Assessment

July 2011



Y A M P A V A L L E Y

DATA

P A R T N E R S

strengthen our community through data and collaboration

Executive Summary

Population and
Landscape

Northwest
Colorado Economy

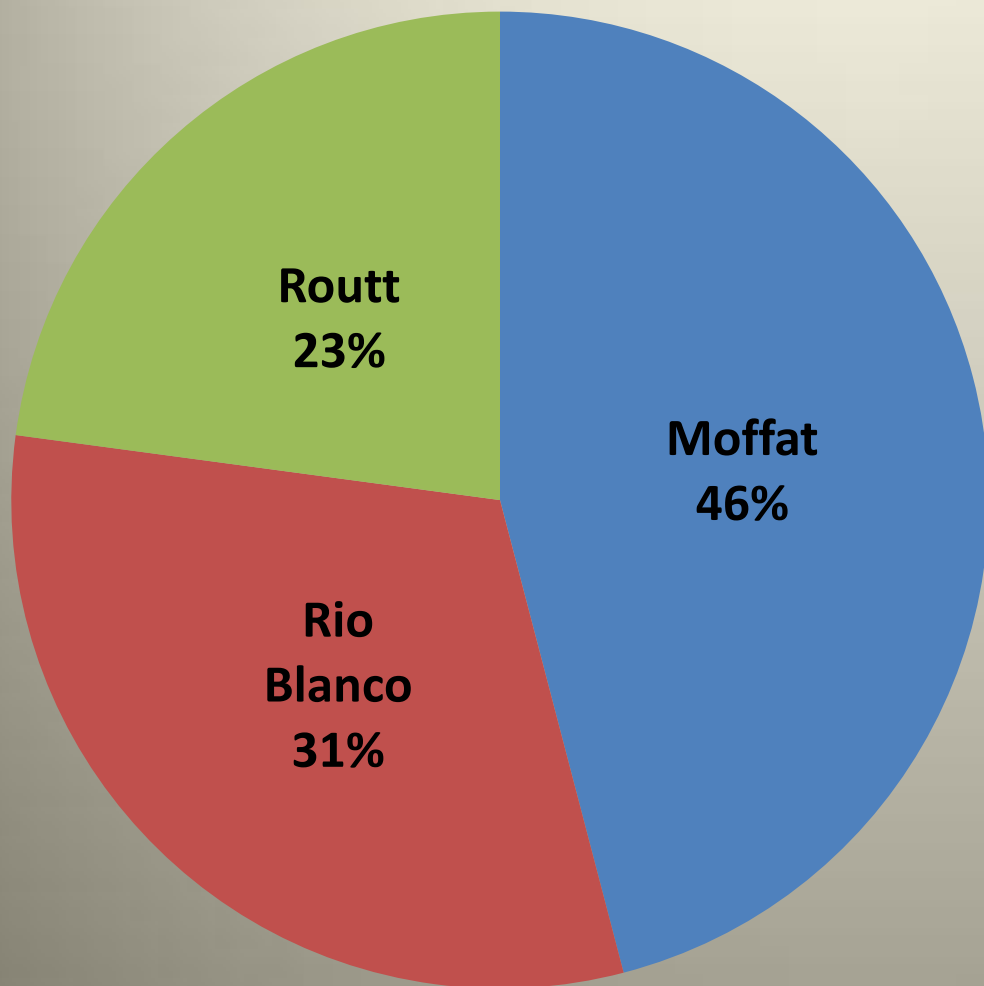
Quality of Life
Indicators

Conclusion

EXECUTIVE SUMMARY

- Energy Development in Rio Blanco and Moffat
- Routt an amenity driven county
- Economic and social influence

Size of the Northwest Colorado Counties in Square Miles



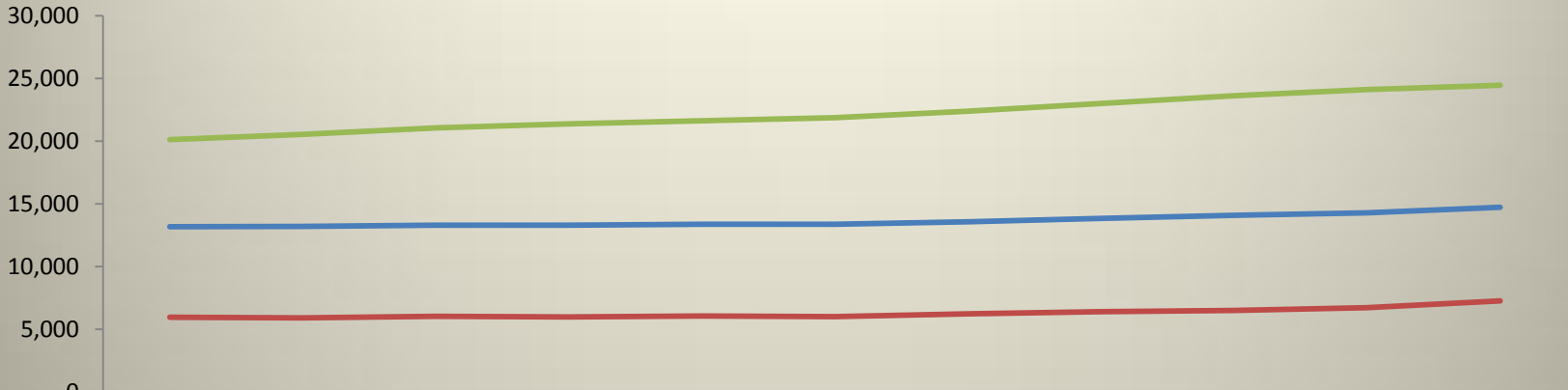
Population Density per Square Mile:

Moffat	3.1
Rio Blanco	2.3
Routt	10.4
Combined	4.5

Percent of Public Land:

Moffat	55%
Rio Blanco	75%
Routt	50%
Combined	60%

Population Growth by County 2000 to 2010



	2000	2001	2002	2003	2004	2005	2006	2007	2008	2009	2010
Moffat	13,179	13,192	13,308	13,296	13,386	13,365	13,581	13,832	14,091	14,278	14,727
Rio Blanco	5,970	5,926	6,042	5,982	6,076	6,026	6,240	6,405	6,514	6,729	7,267
Routt	20,121	20,528	21,063	21,378	21,623	21,862	22,384	23,011	23,622	24,109	24,465

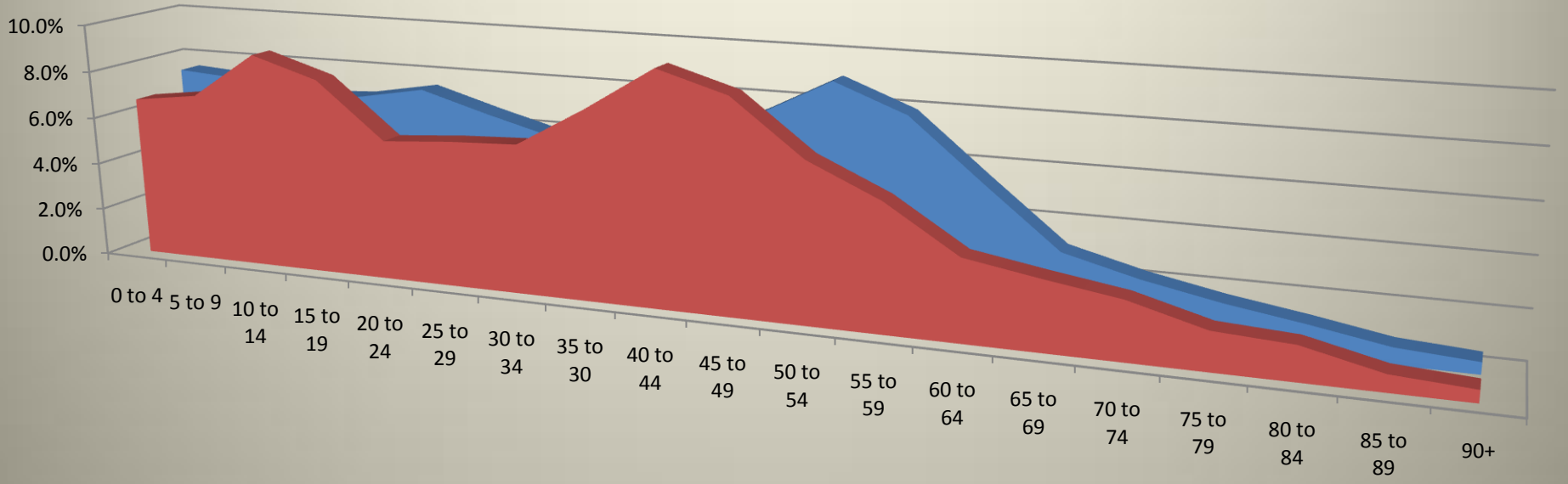
Median Age

	2000	2010
Moffat	35.5	35.6
Rio Blanco	37.6	34.4
Routt	35.1	38.6
Colorado	34.4	36.3
Nationally	35.3	36.8

Population Growth 2000 to 2010

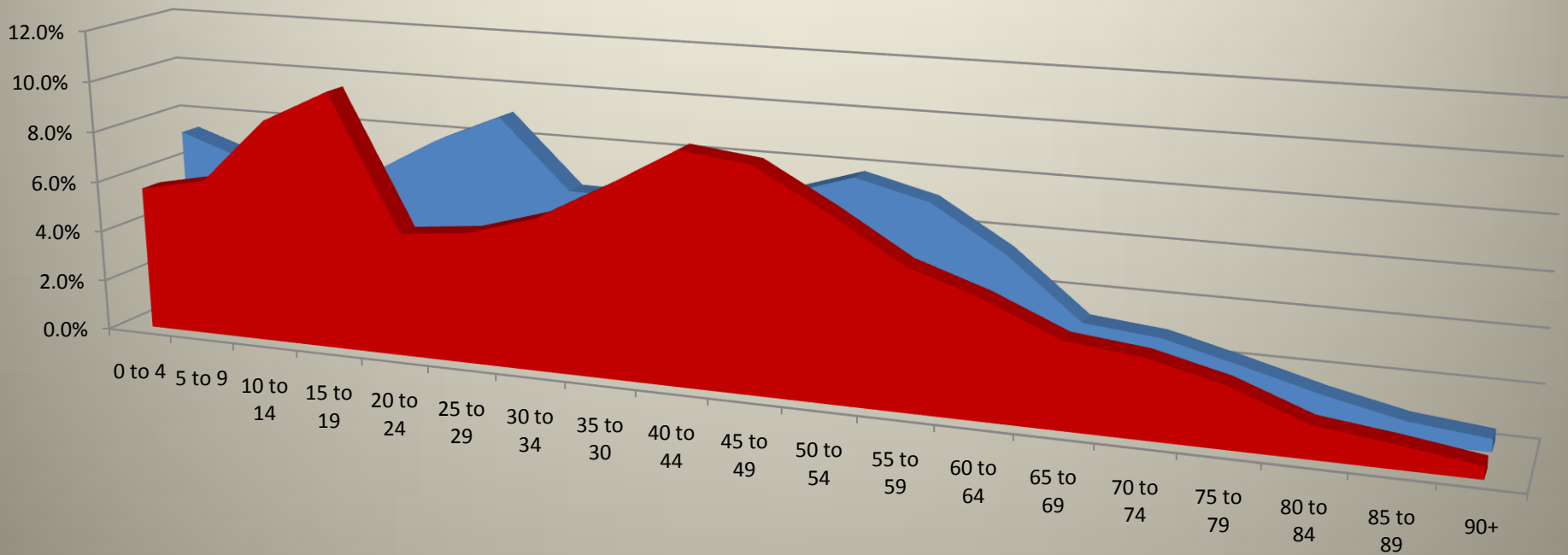
Moffat	11.7%
Rio Blanco	21.7%
Routt	21.6%
Combined	18.3%
Colorado	16.9%
Nationally	9.7%

Moffat County 2000 to 2010 Change in Population Age Distribution



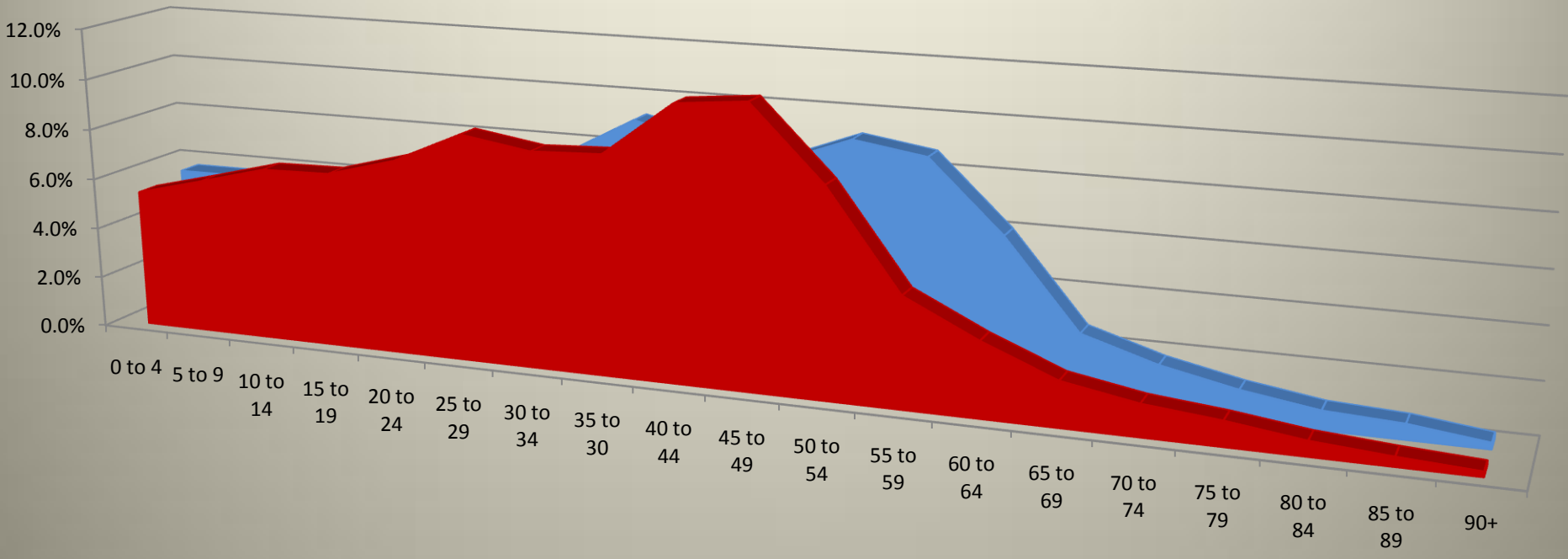
	0 to 4	5 to 9	10 to 14	15 to 19	20 to 24	25 to 29	30 to 34	35 to 39	40 to 44	45 to 49	50 to 54	55 to 59	60 to 64	65 to 69	70 to 74	75 to 79	80 to 84	85 to 89	90+
2000	6.8%	7.1%	9.0%	8.2%	5.9%	6.1%	6.2%	7.8%	9.7%	8.8%	6.6%	5.2%	3.4%	2.8%	2.4%	1.6%	1.4%	0.7%	0.5%
2010	7.5%	7.3%	6.8%	6.9%	7.4%	6.6%	5.9%	6.3%	6.2%	7.5%	9.0%	7.9%	5.4%	3.0%	2.3%	1.7%	1.2%	0.7%	0.5%

Rio Blanco County 2000 to 2010 Change in Population Age Distribution



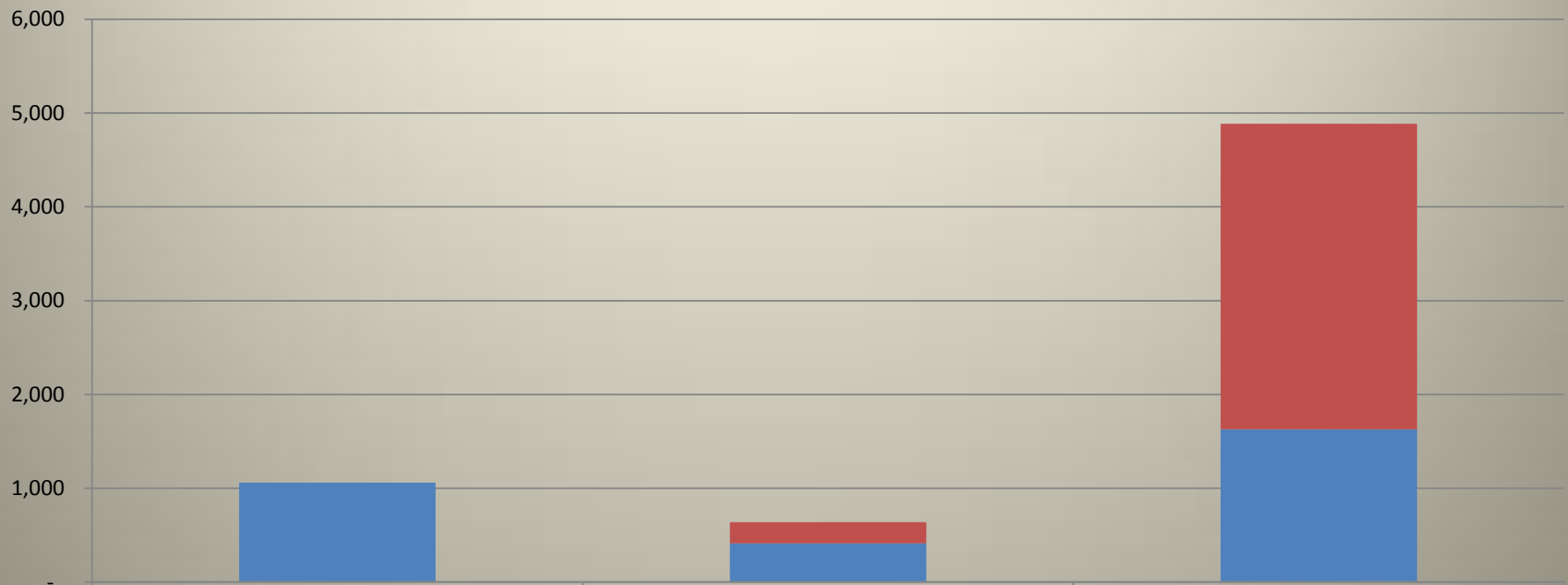
	0 to 4	5 to 9	10 to 14	15 to 19	20 to 24	25 to 29	30 to 34	35 to 39	40 to 44	45 to 49	50 to 54	55 to 59	60 to 64	65 to 69	70 to 74	75 to 79	80 to 84	85 to 89	90+
2000	5.7%	6.2%	8.8%	10.1%	4.8%	5.1%	5.9%	7.4%	9.0%	8.6%	7.1%	5.4%	4.5%	3.3%	3.0%	2.3%	1.2%	0.9%	0.5%
2010	7.4%	6.5%	6.0%	6.3%	7.8%	9.0%	6.3%	6.3%	6.4%	6.9%	7.8%	7.1%	5.4%	3.1%	2.9%	2.1%	1.4%	0.8%	0.5%

Routt County 2000 to 2010 Change in Population Age Distribution



	0 to 4	5 to 9	10 to 14	15 to 19	20 to 24	25 to 29	30 to 34	35 to 30	40 to 44	45 to 49	50 to 54	55 to 59	60 to 64	65 to 69	70 to 74	75 to 79	80 to 84	85 to 89	90+
2000	5.4%	6.1%	6.8%	6.8%	7.6%	8.8%	8.4%	8.5%	10.6%	10.8%	8.0%	4.3%	2.9%	1.7%	1.2%	0.9%	0.6%	0.4%	0.2%
2010	5.7%	5.7%	5.8%	6.5%	6.1%	5.9%	7.7%	9.2%	8.5%	8.0%	9.1%	8.7%	6.0%	2.6%	1.8%	1.2%	0.7%	0.6%	0.2%

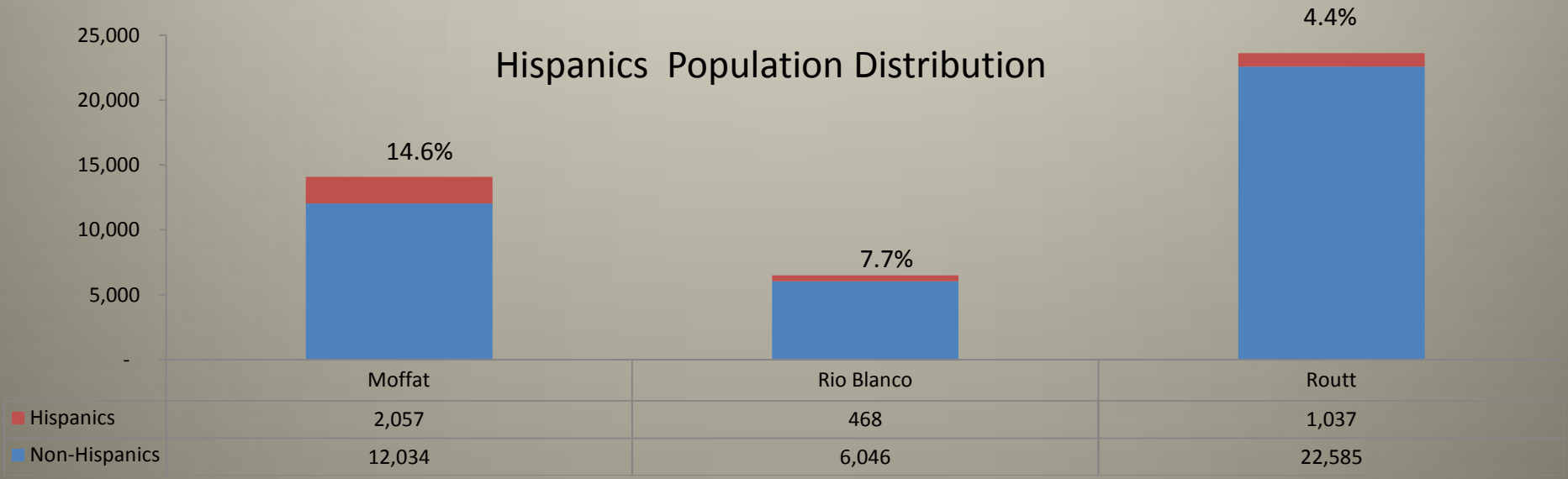
Source of Population Growth in the County 2000 to 2010



	Moffat	Rio Blanco	Routt
Migration	-	226	3,255
Natural	1,061	412	1,630

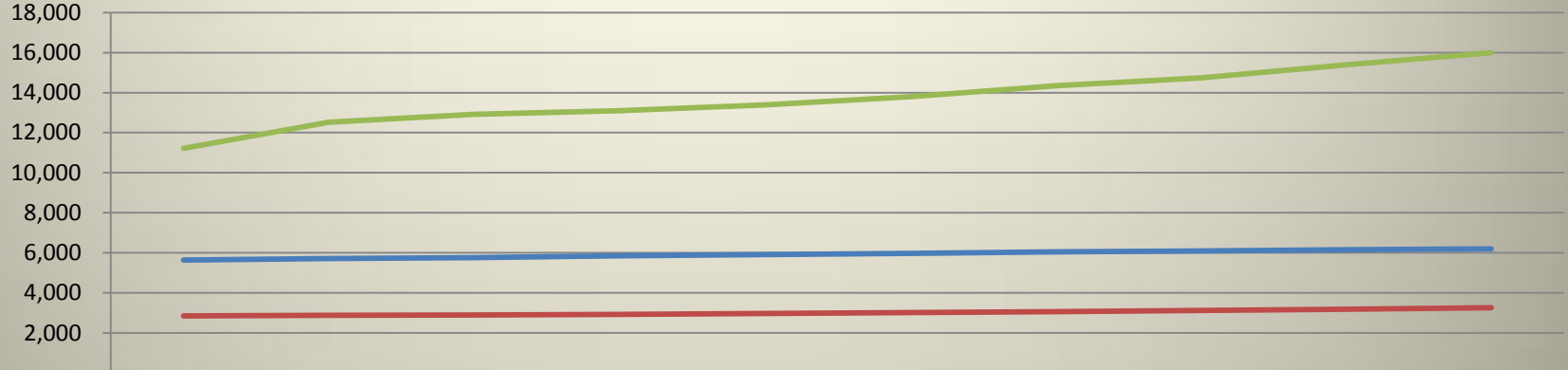
Racial Distribution of Northwest Colorado Counties

	Moffat	Rio Blanco	Routt
White	95.9%	96.4%	95.0%
African American	0.8%	<0.0%	0.2%
Native American	2.9%	3.2%	4.6%
Asian	0.3%	0.4%	.02%
Other	0.1%	<0.0%	<0.0%



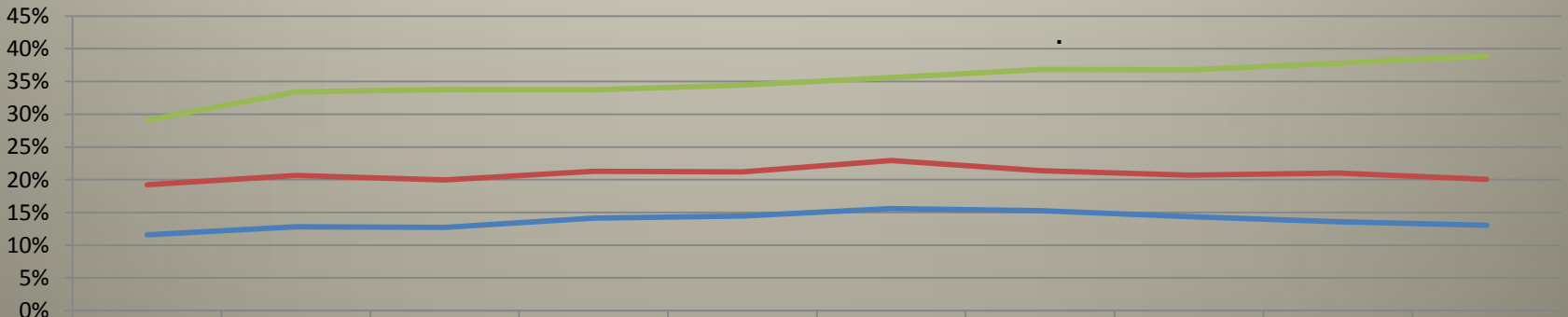
2008 Census Estimates

Housing Units by County



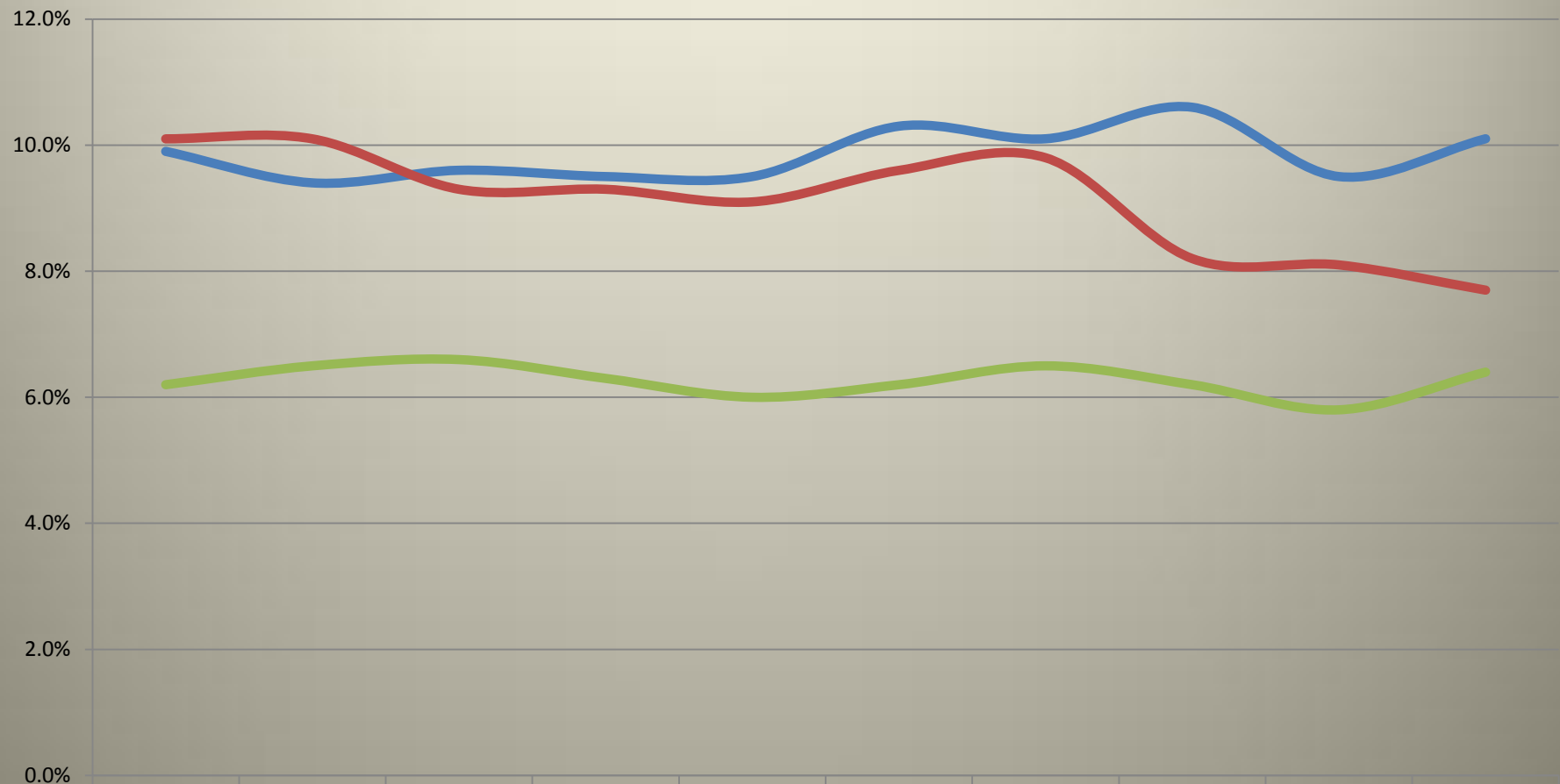
	2000	2001	2002	2003	2004	2005	2006	2007	2008	2009
Moffat	5,635	5,711	5,759	5,848	5,908	5,977	6,050	6,099	6,162	6,201
Rio Blanco	2,855	2,878	2,903	2,929	2,974	3,015	3,063	3,118	3,191	3,258
Routt	11,217	12,520	12,913	13,099	13,393	13,791	14,345	14,734	15,387	15,991

Percentage of Unoccupied Housing



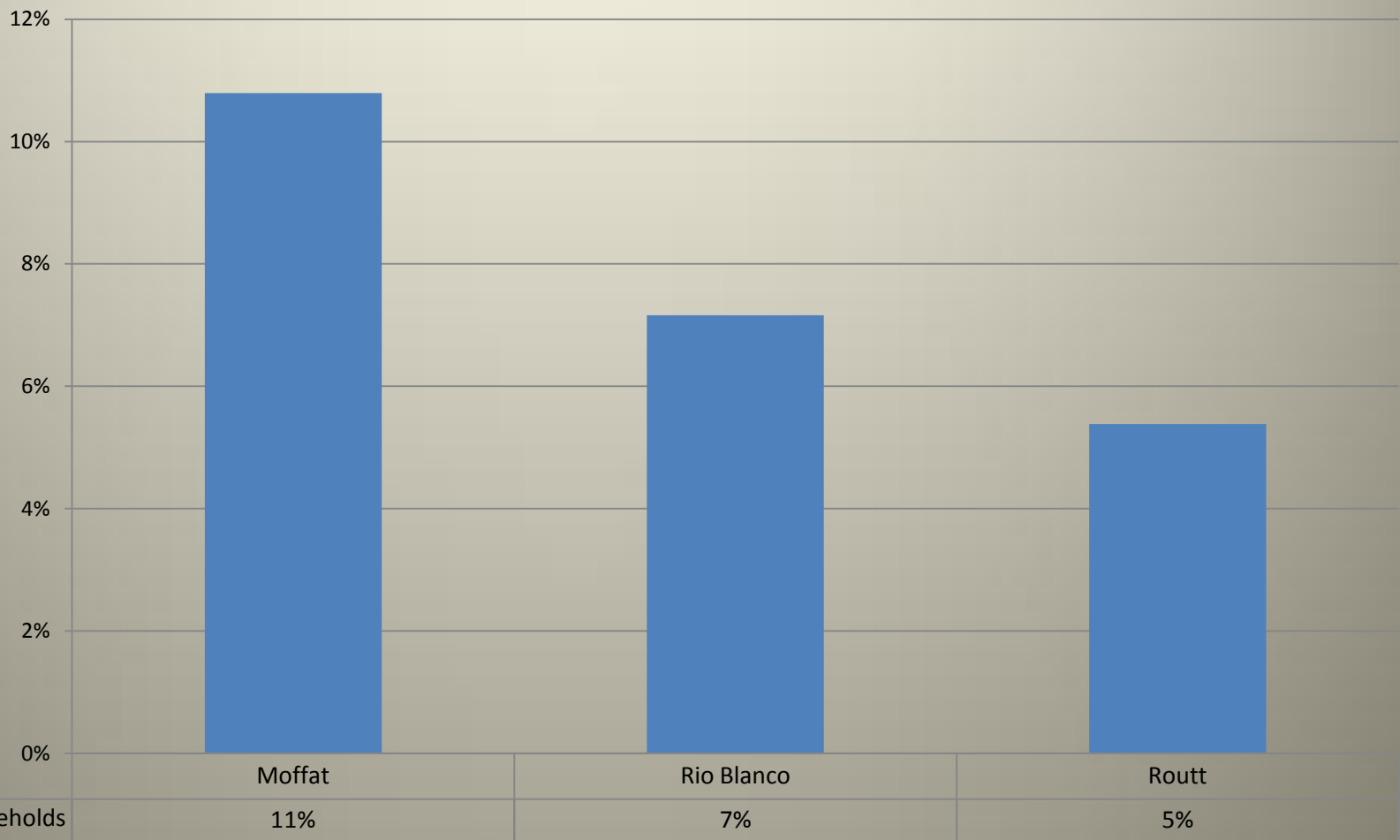
	2000	2001	2002	2003	2004	2005	2006	2007	2008	2009
Moffat	12%	13%	13%	14%	14%	16%	15%	14%	14%	13%
Rio Blanco	19%	21%	20%	21%	21%	23%	21%	21%	21%	20%
Routt	29%	33%	34%	34%	34%	36%	37%	37%	38%	39%

Northwest Colorado Poverty Rates by County



	2000	2001	2002	2003	2004	2005	2006	2007	2008	2009
Moffat	9.9%	9.4%	9.6%	9.5%	9.5%	10.3%	10.1%	10.6%	9.5%	10.1%
Rio Blanco	10.1%	10.1%	9.3%	9.3%	9.1%	9.6%	9.8%	8.2%	8.1%	7.7%
Routt	6.2%	6.5%	6.6%	6.3%	6.0%	6.2%	6.5%	6.2%	5.8%	6.4%

Percent of Single Parent Households in Northwest Colorado



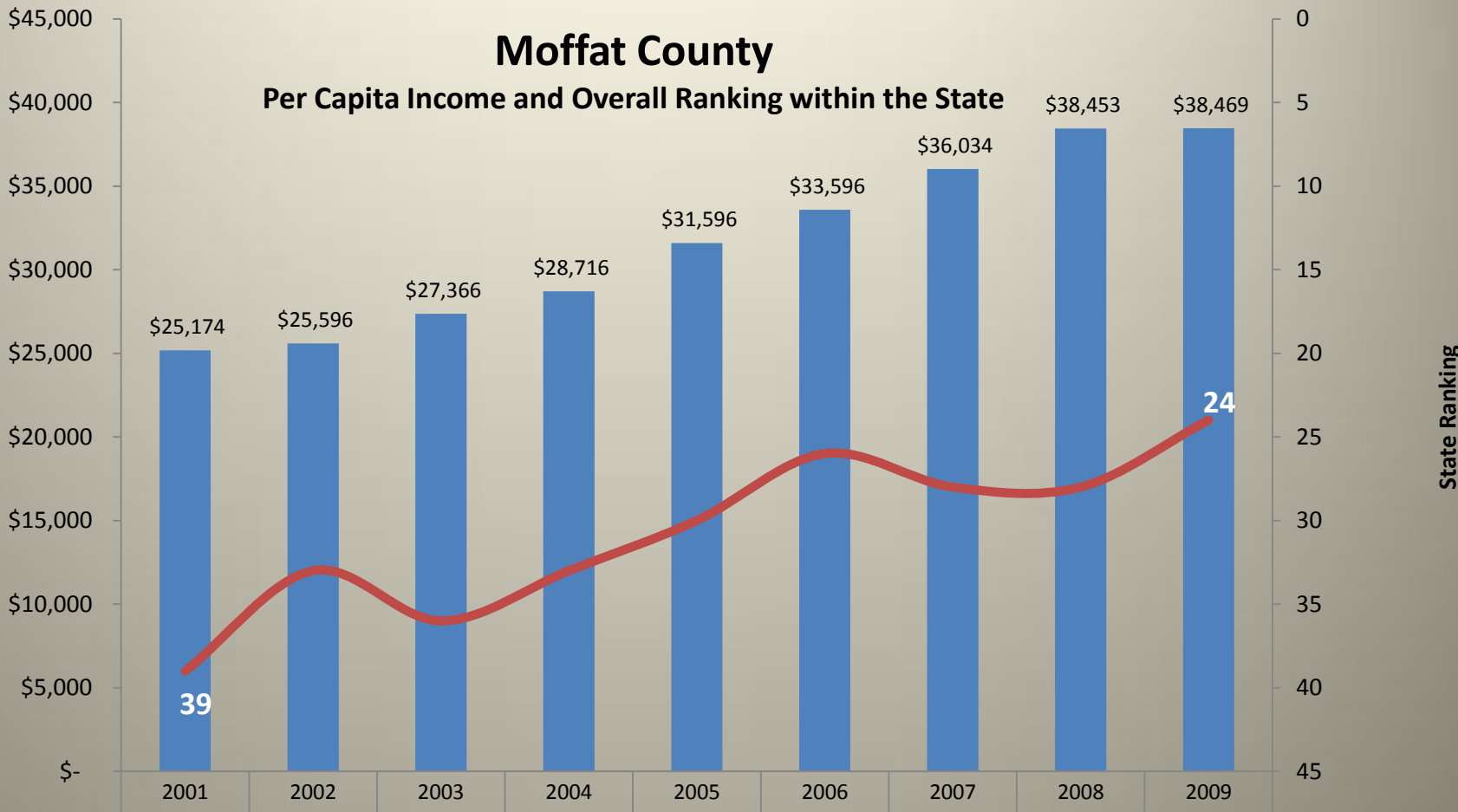


Per Capita Income

	2001	2009
Moffat	\$25,174	\$38,461
Rio Blanco	\$30,032	\$42,882
Routt	\$36,457	\$49,139
Colorado	\$35,296	\$41,895
Nationally	\$31,145	\$39,635

Per Capita Income in Northwest Colorado Grew at a Rate 20% or more than the Rate of Inflation.

Community Assessment /Northwest Colorado Economy



Per Capita Income	\$25,174	\$25,596	\$27,366	\$28,716	\$31,596	\$33,596	\$36,034	\$38,453	\$38,469
Ranking within the State	39	33	36	33	30	26	28	28	24

Rio Blanco County Per Capita Income and Overall Ranking within the State

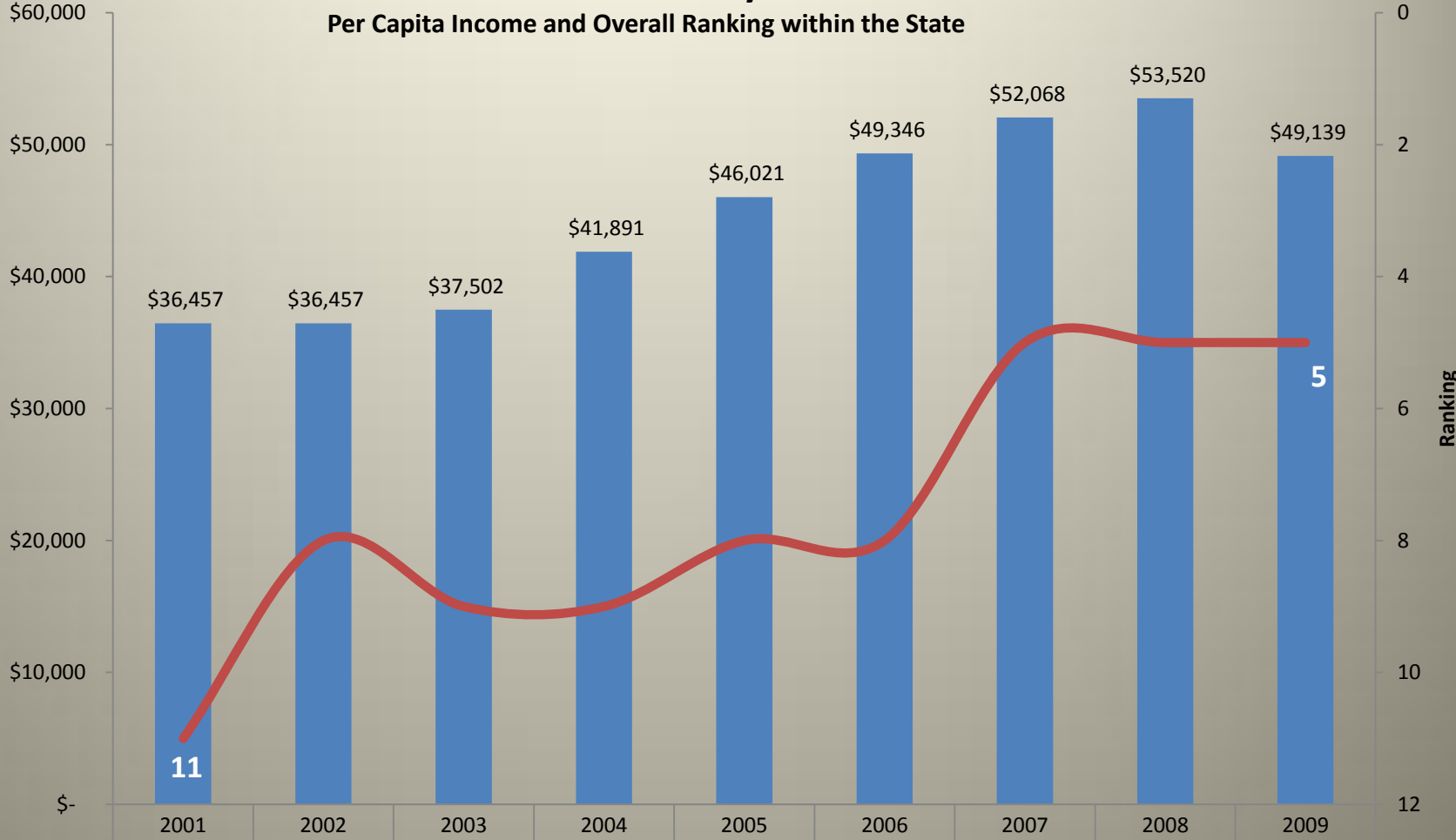


Per Capita Income	\$30,032	\$29,824	\$33,938	\$33,958	\$38,450	\$41,134	\$46,315	\$48,173	\$42,882
Ranking within the State	24	22	22	17	13	14	11	10	15

Community Assessment /Northwest Colorado Economy

Routt County




Per Capita Income and Overall Ranking within the State






Per Capita Income	\$36,457	\$36,457	\$37,502	\$41,891	\$46,021	\$49,346	\$52,068	\$53,520	\$49,139
Ranking within the State	11	8	9	9	8	8	5	5	5



Economic Diversification

Sources of Income

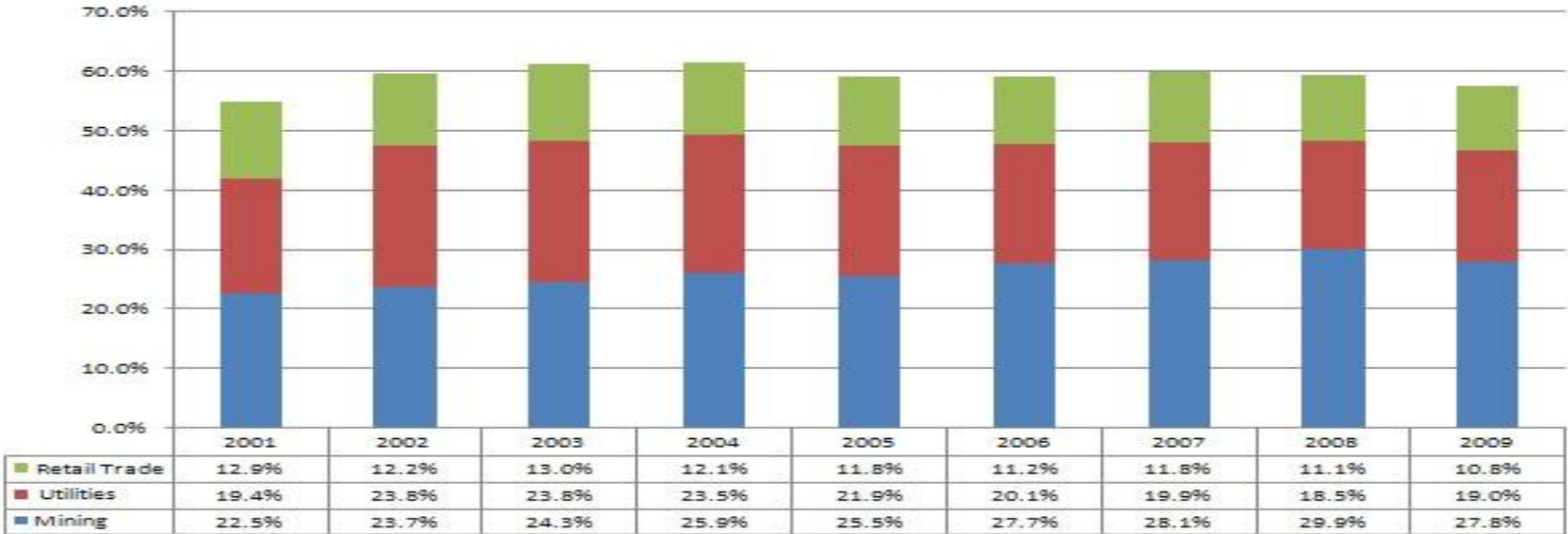
	2001	2009	Direction
Moffat	54.8%	57.6%	
Rio Blanco	51.3%	67.4%	
Routt	43.9%	42.4%	

Sources of Employment

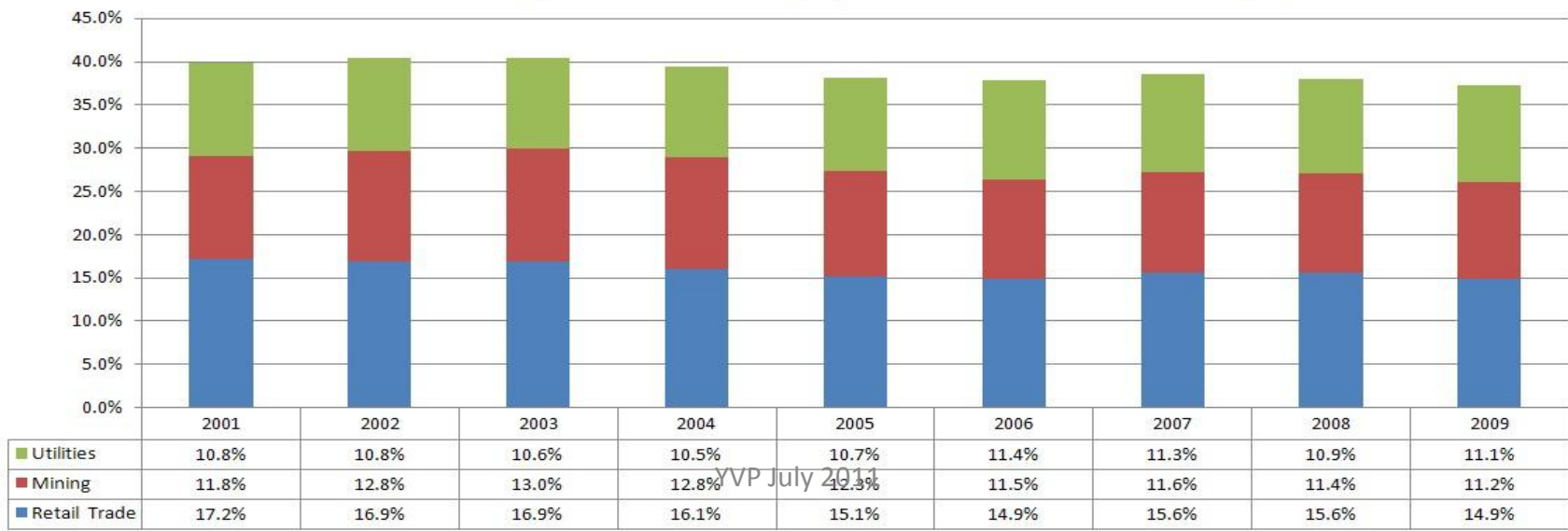
	2001	2009	Direction
Moffat	39.8%	37.2%	
Rio Blanco	47.0%	52.4%	
Routt	44.6%	38.4%	

 = More Diverse
 = Less Diverse

Moffat County Economic Diversity
 Contribution of Top 3 Private Sector Earnings to Total Private Sector Earnings

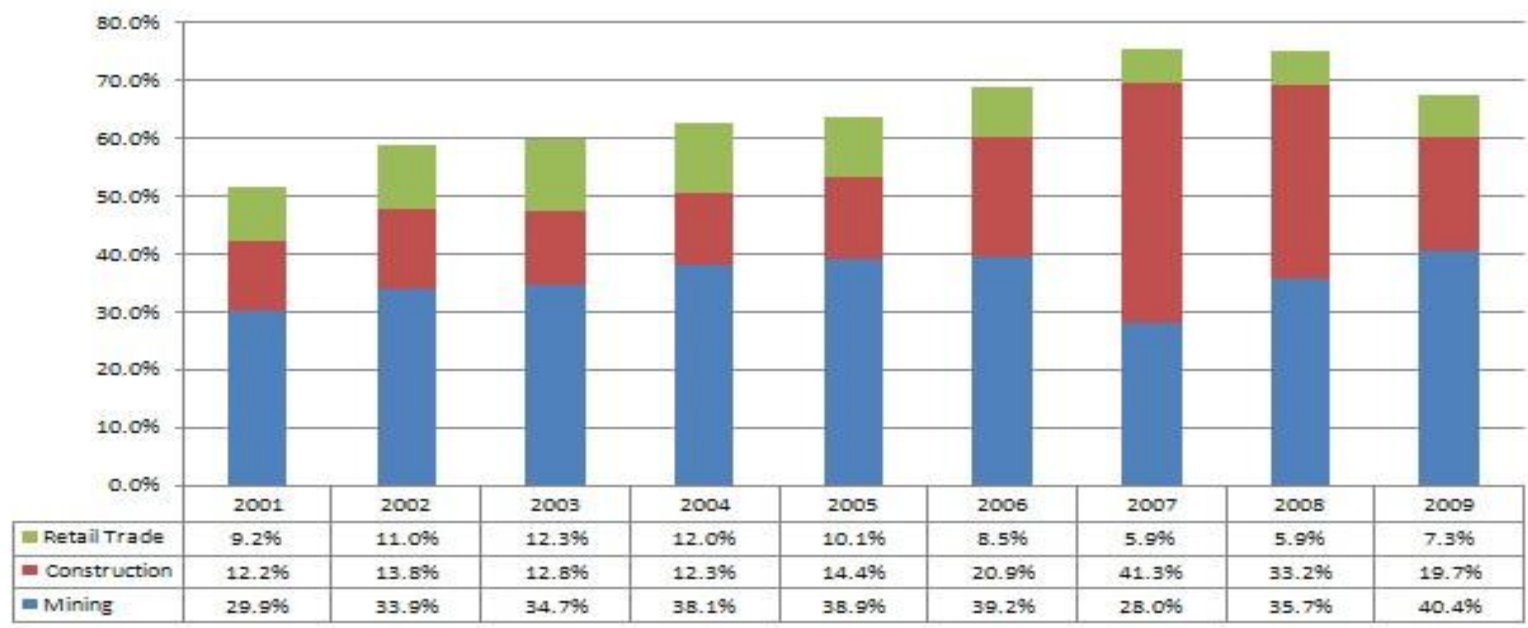


Moffat County Economic Diversity
 Contribution of Top 3 Private Sector Employment to Total Private Sector Employment



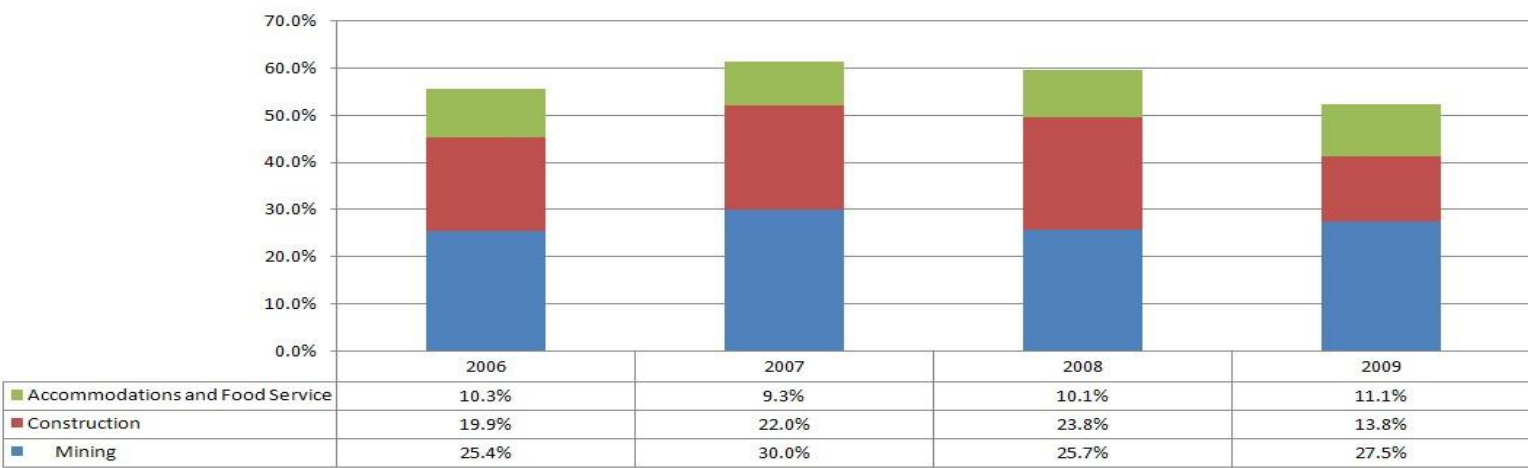
VVP July 2011

Rio Blanco County Economic Diversity Contribution of Top 3 Private Sector Earnings to Total Private Sector Earnings



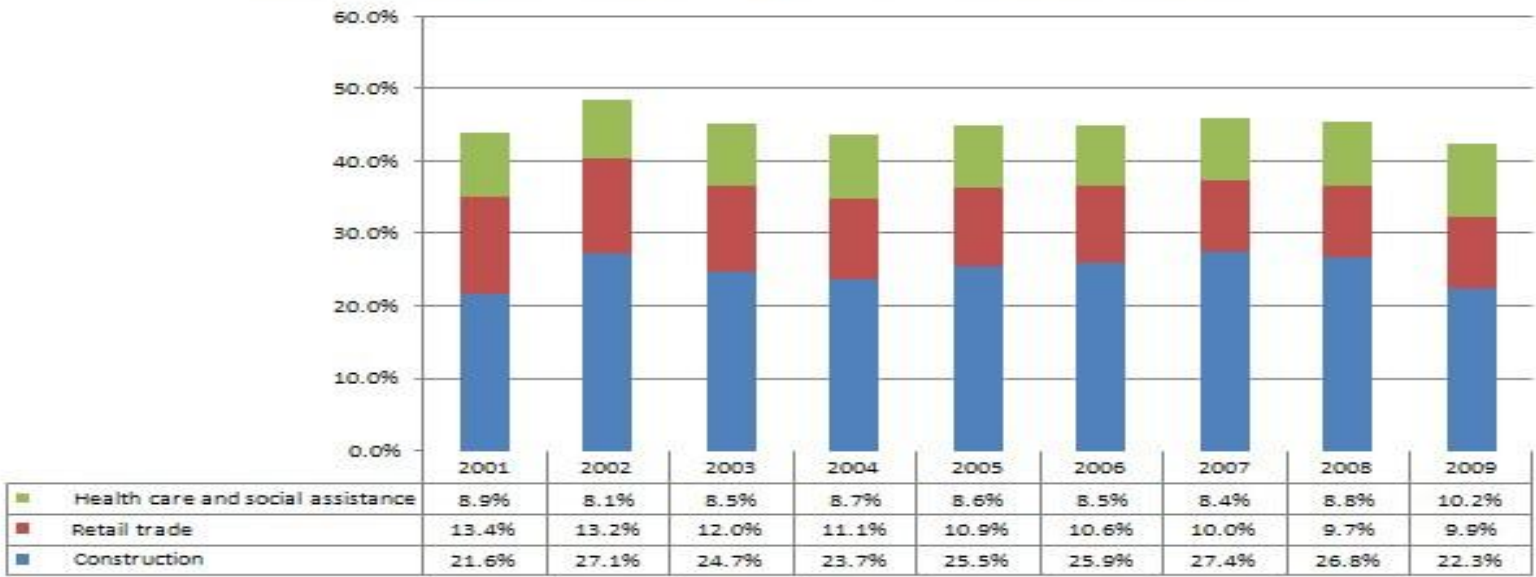
Rio Blanco County Economic Diversity - Employment 2006 to 2009

Contribution of Top 3 Private Sector Employment to Total Private Sector Employment



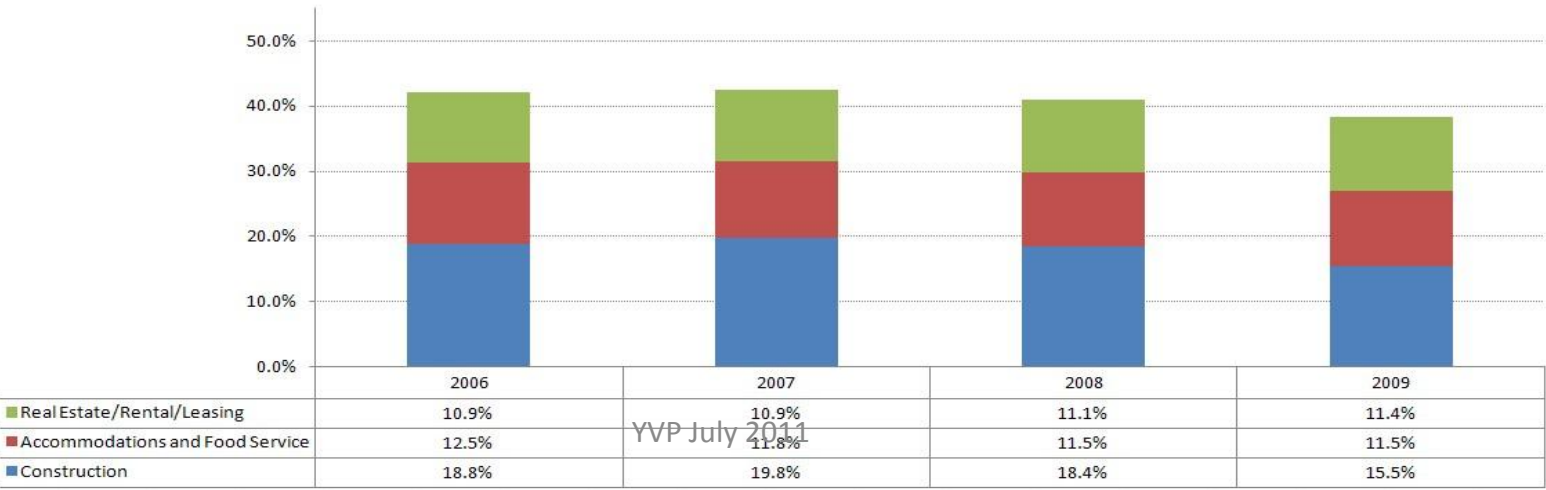
Routt County Economic Diversity

Contribution of Top 3 Private Sector Earnings to Total Private Sector Earnings



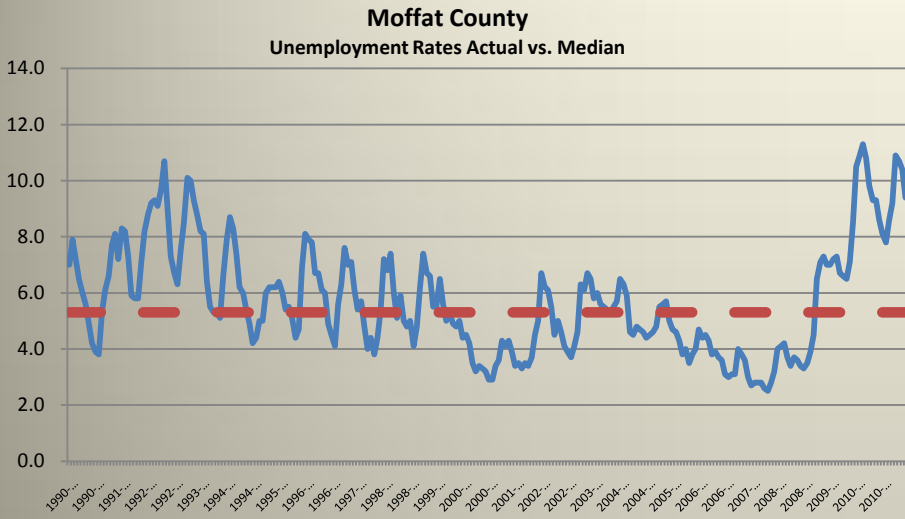
Routt County Economic Diversity /2006-2009

Contribution of Top 3 Private Sector Employment to Total Private Sector Employment



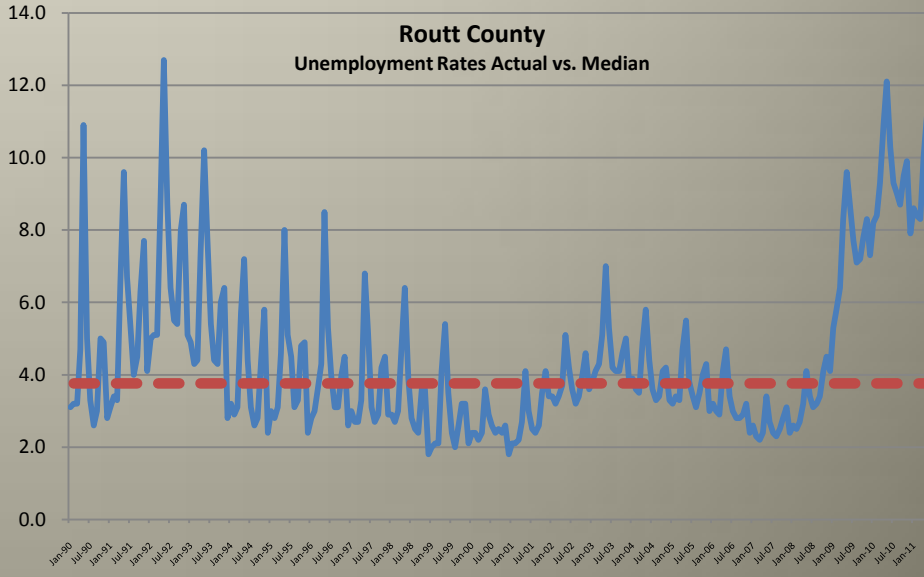
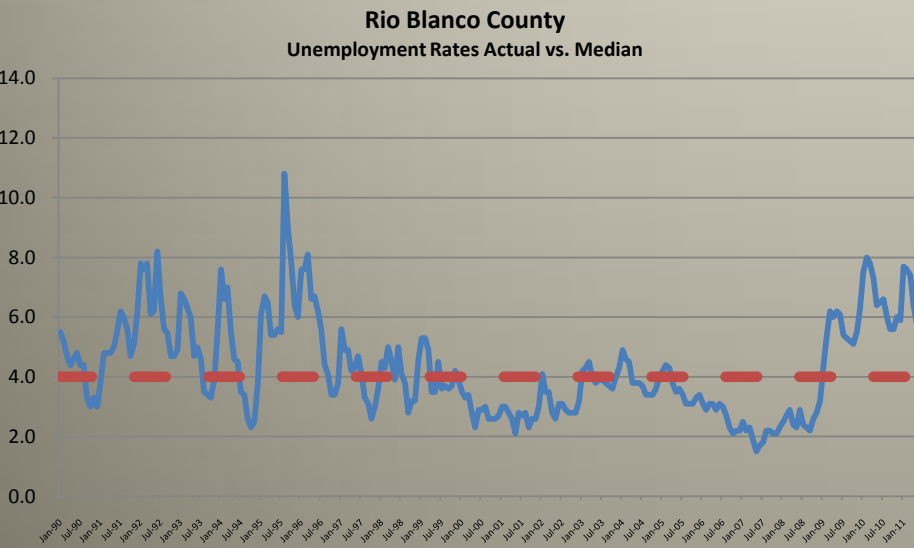
YVP July 2011

Community Assessment /Northwest Colorado Economy



Median Unemployment Jan 1990 to May 2011

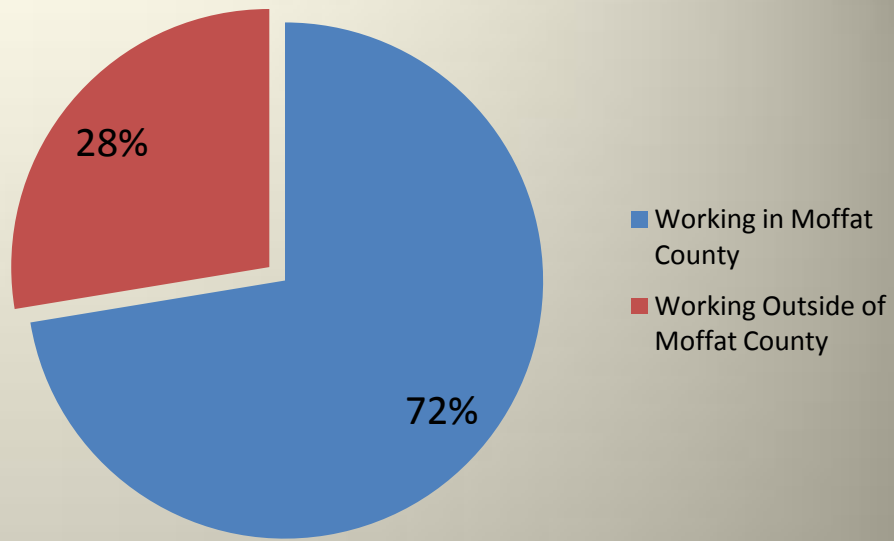
Moffat	5.3%
Rio Blanco	4.0%
Routt	3.8%



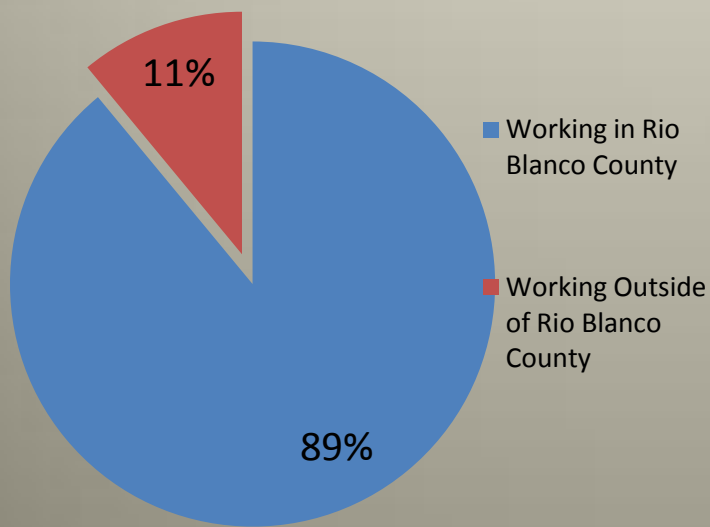
WORKFORCE COMMUTING PATTERNS

W2 Covered Employment

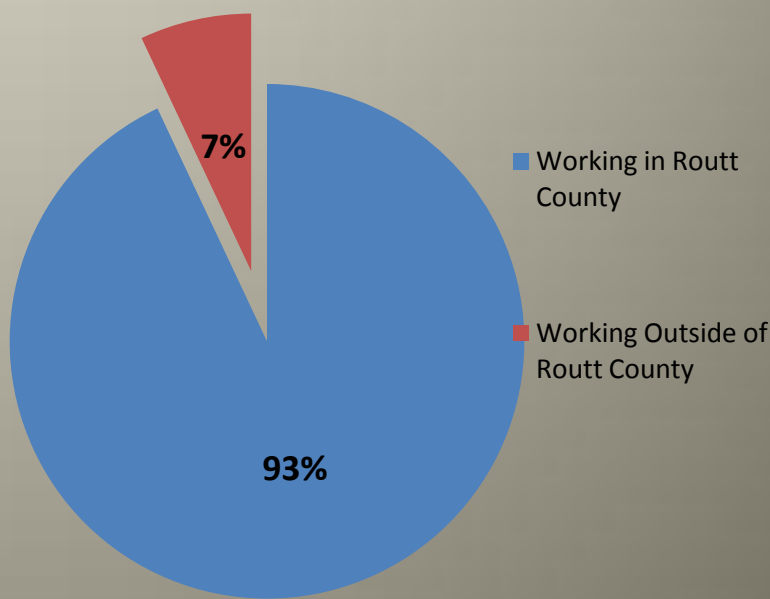
Where are the Residents of Moffat County Working?



Where are the Residents of Rio Blanco County Working?



Where are the Residents of Routt County Working?



Community Assessment / Northwest Colorado Economy

Increase in Taxable Property Valuations 2003 to 2010

Moffat	60%
Rio Blanco	271%
Routt	114%

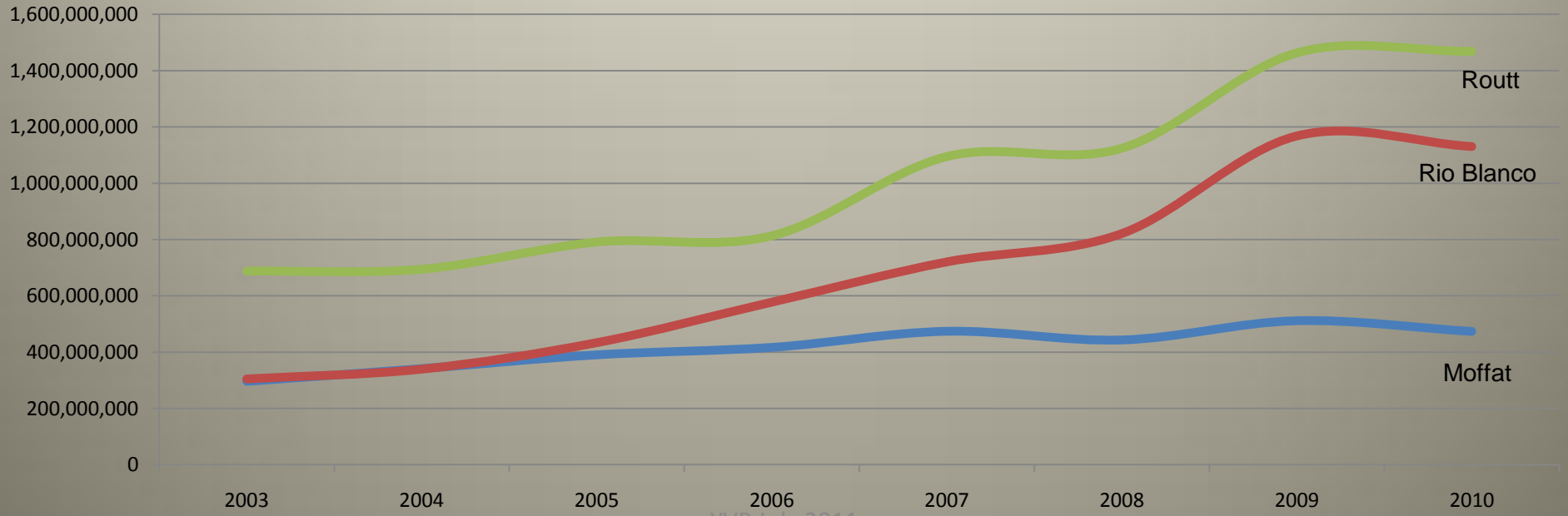
2010 Property Tax Collections

Moffat	\$30,369,335
Rio Blanco	\$48,764,982
Routt	\$61,684,450

Average Mill Levy in 2010

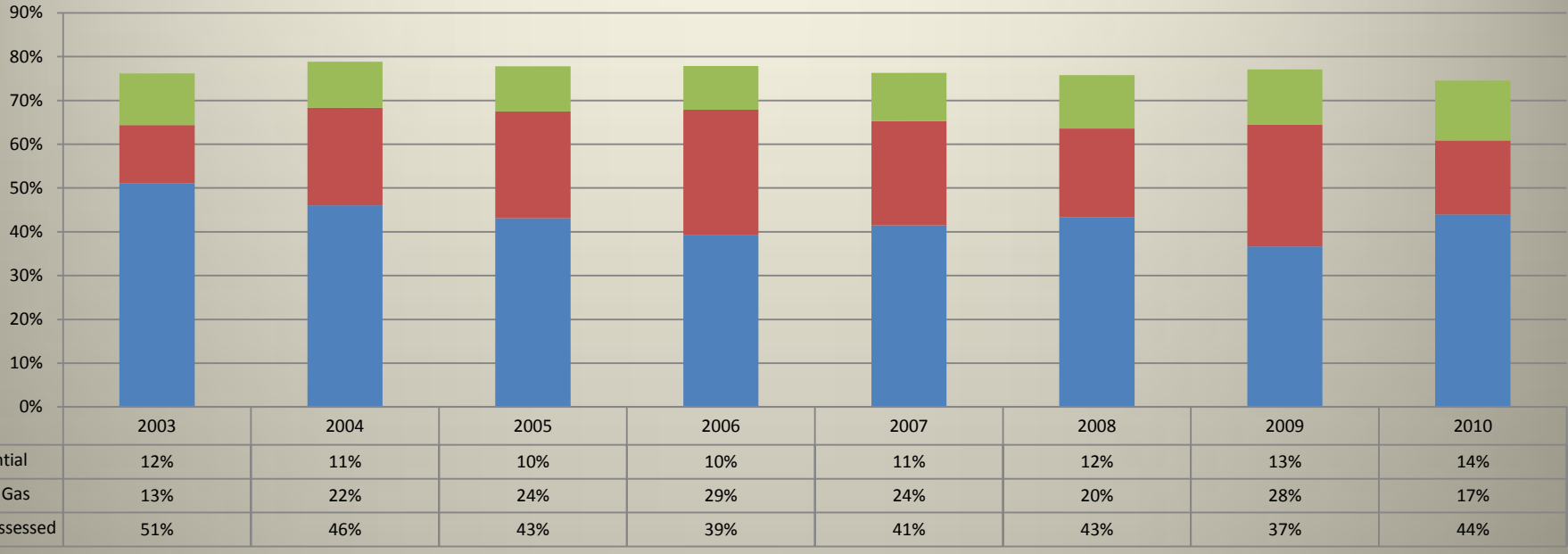
Moffat	63.183
Rio Blanco	40.376
Routt	44.600

Northwest Colorado Counties Total Taxable Assessment

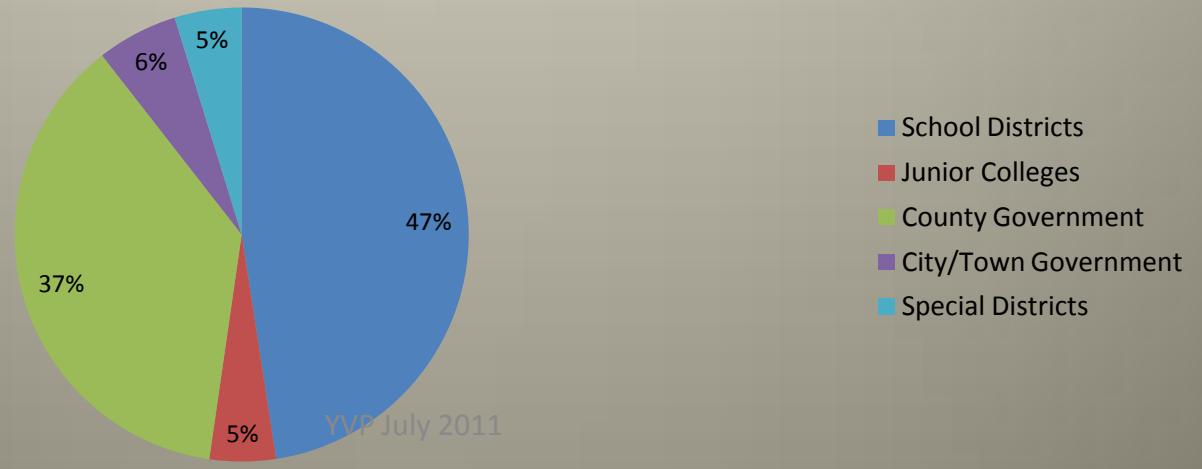


Community Assessment /Northwest Colorado Economy

Moffat County / Top Three Property Tax Assessment Categories

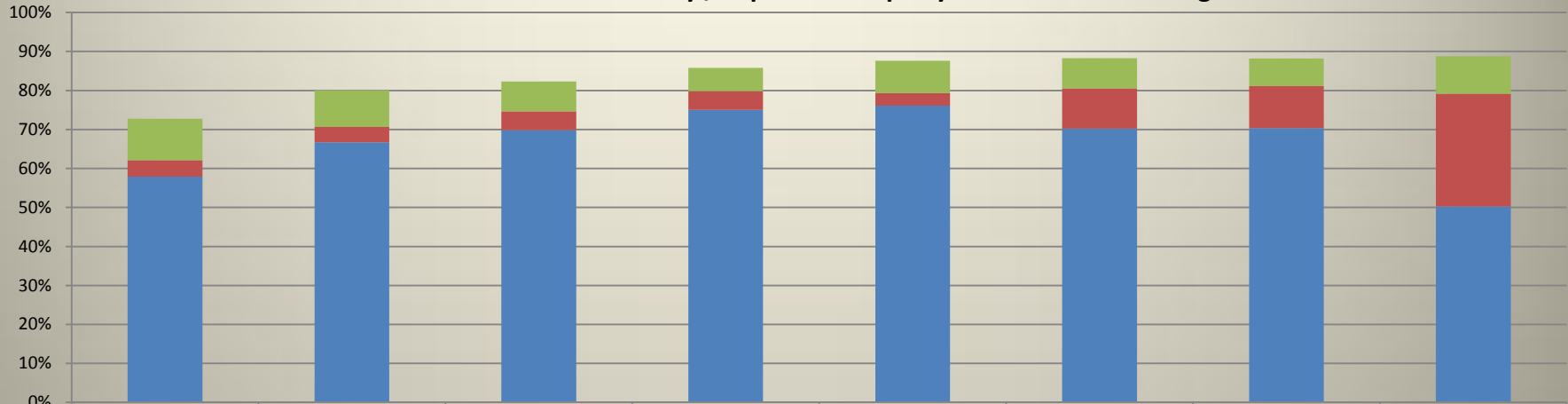


Moffat County / Who Benefits from Property Tax Dollars / 2010



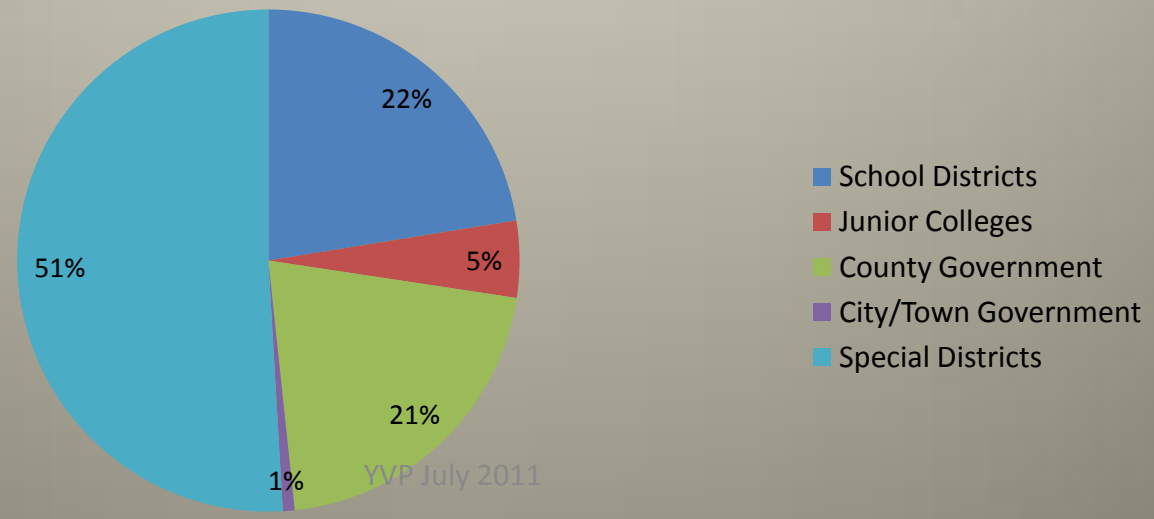
Community Assessment /Northwest Colorado Economy

Rio Blanco County / Top Three Property Tax Assessment Categories



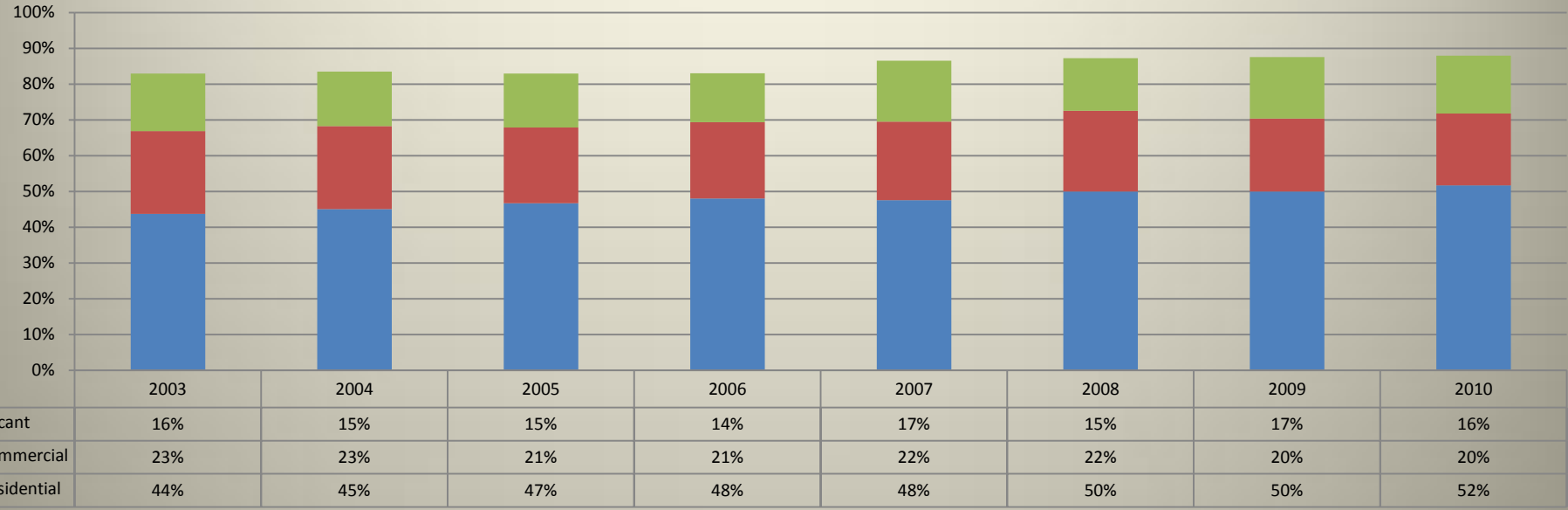
	2003	2004	2005	2006	2007	2008	2009	2010
State Assessed	11%	9%	8%	6%	8%	8%	7%	10%
Industrial	4%	4%	5%	5%	3%	10%	11%	29%
Oil and Gas	58%	67%	70%	75%	76%	70%	70%	50%

Rio Blanco County / Who Benefits from Property Tax Dollars /2010

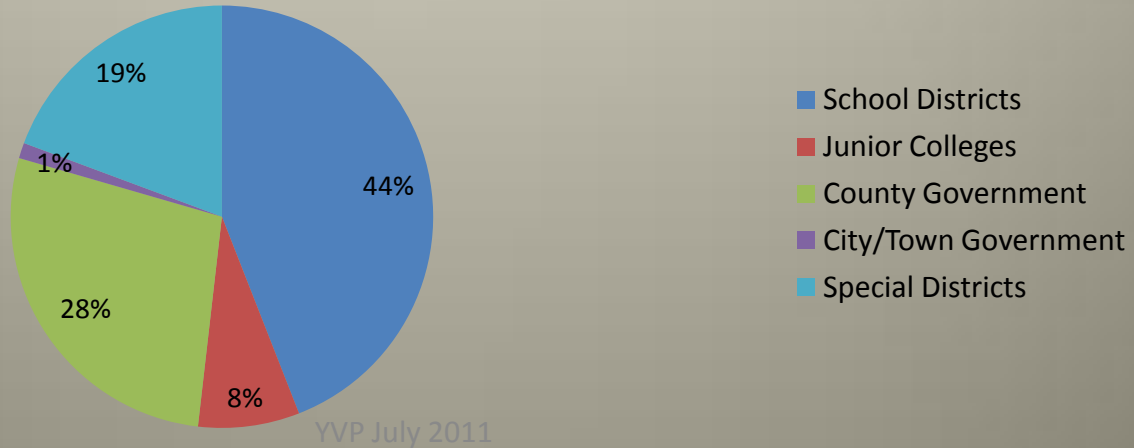


Community Assessment /Northwest Colorado Economy

Routt County / Top Three Property Tax Assessment Categories

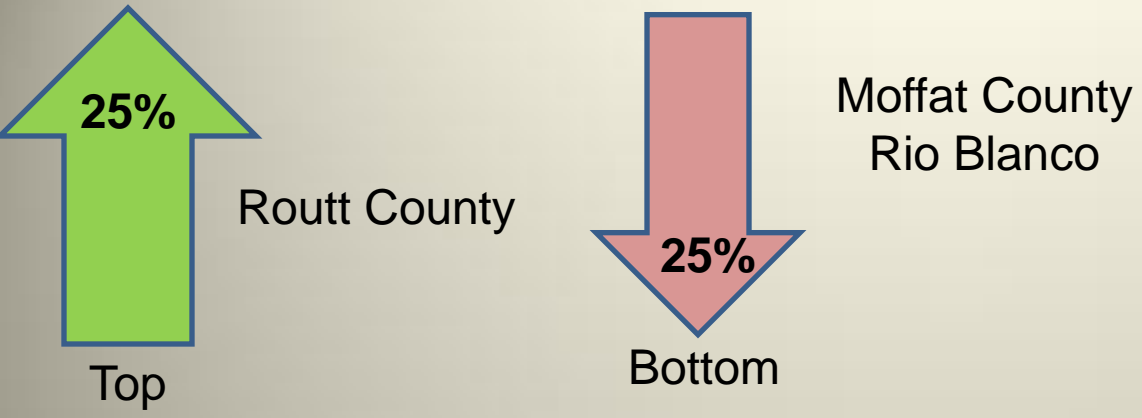


Routt County / Who Benefits from Property Tax Dollars / 2010

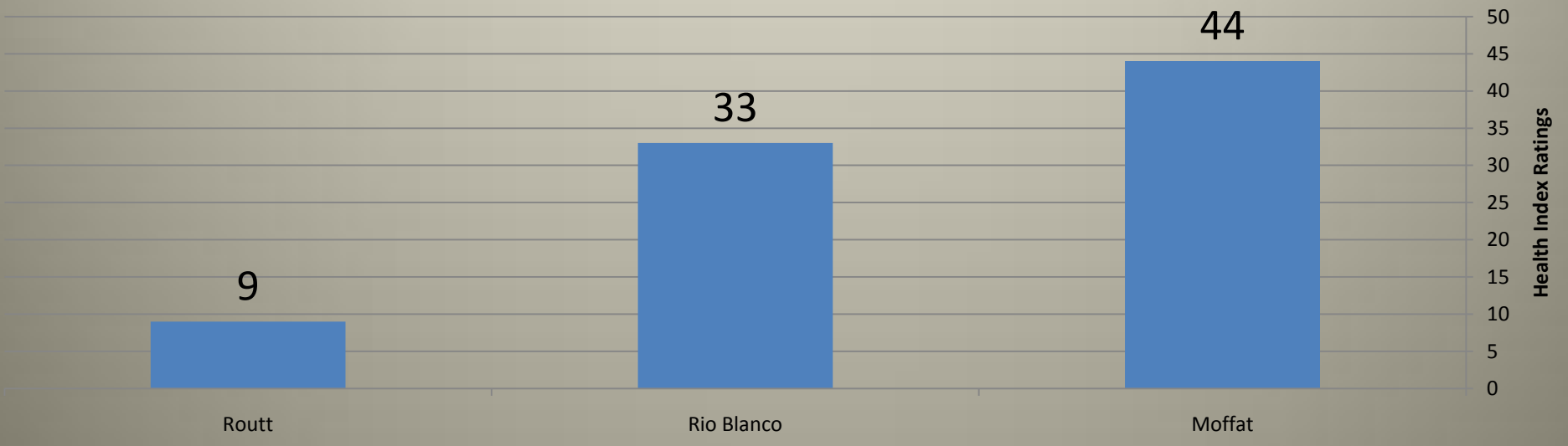


YVP July 2011

Health Index

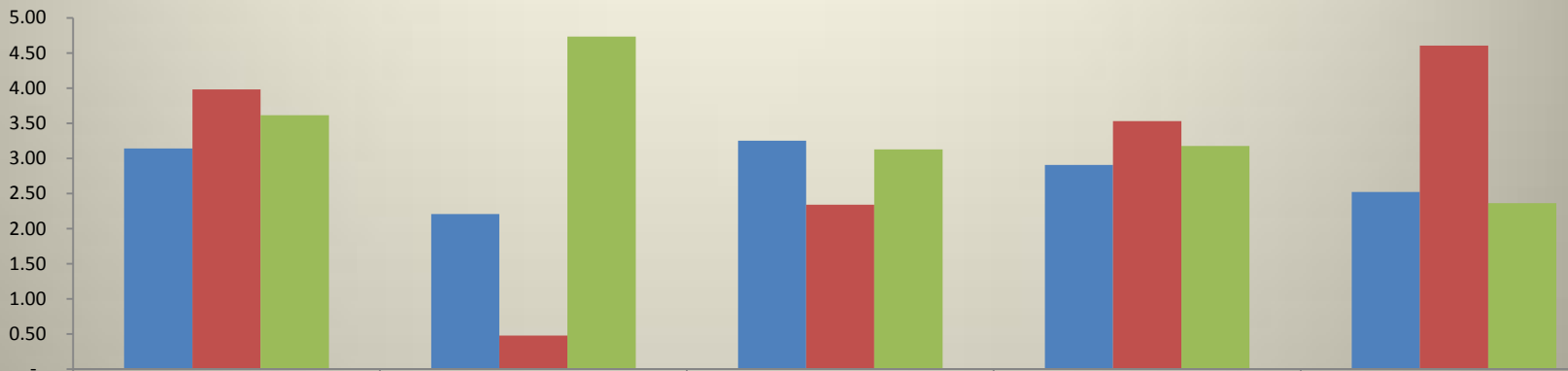


County's Health 2011 Index Rating Compared to 57 Other Colorado Counties



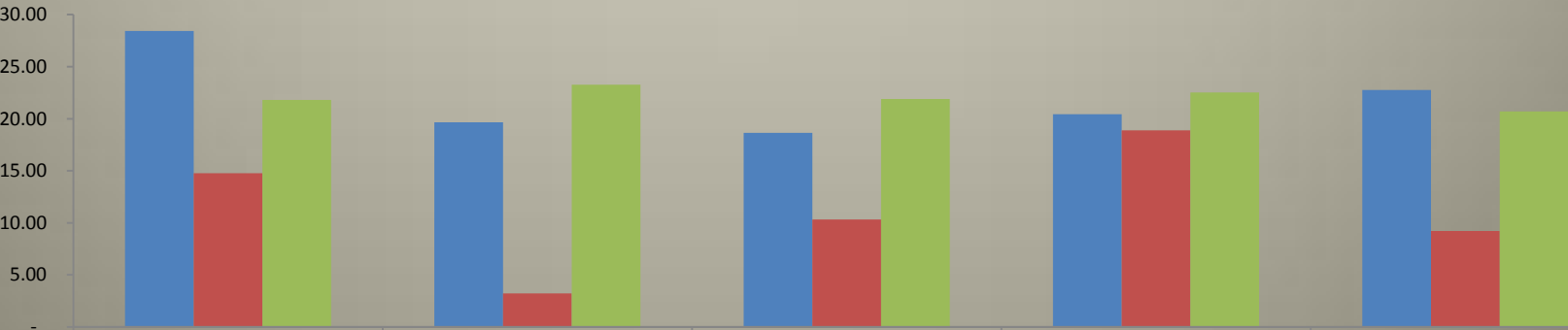
Community Assessment /Quality of Life Indicators

Violent Crime Rate Per 1,000 of Population



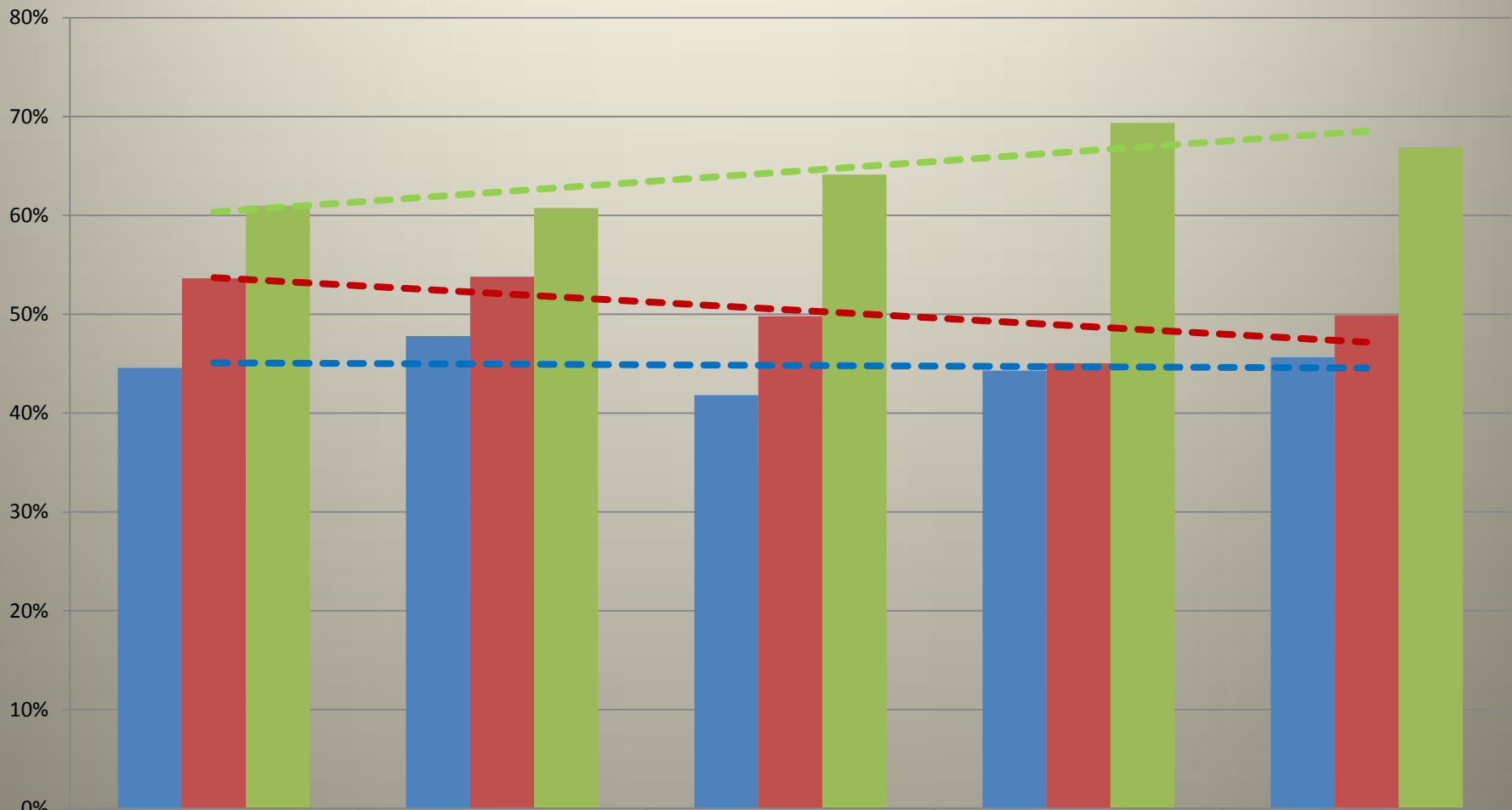
	2005	2006	2007	2008	2009
Moffat County	3.14	2.21	3.25	2.91	2.52
Rio Blanco County	3.98	0.48	2.34	3.53	4.61
Routt County	3.61	4.74	3.13	3.18	2.36

Property Crime Rate Per 1,000 of Population



	2005	2006	2007	2008	2009
Moffat County	28.44	19.66	18.65	20.43	22.76
Rio Blanco County	14.76	3.20	10.31	18.87	9.21
Routt County	21.82	23.28	21.91	22.52	20.69

Composite CSAP Scores 9th & 10th Grade Students Scoring Proficient or Advanced

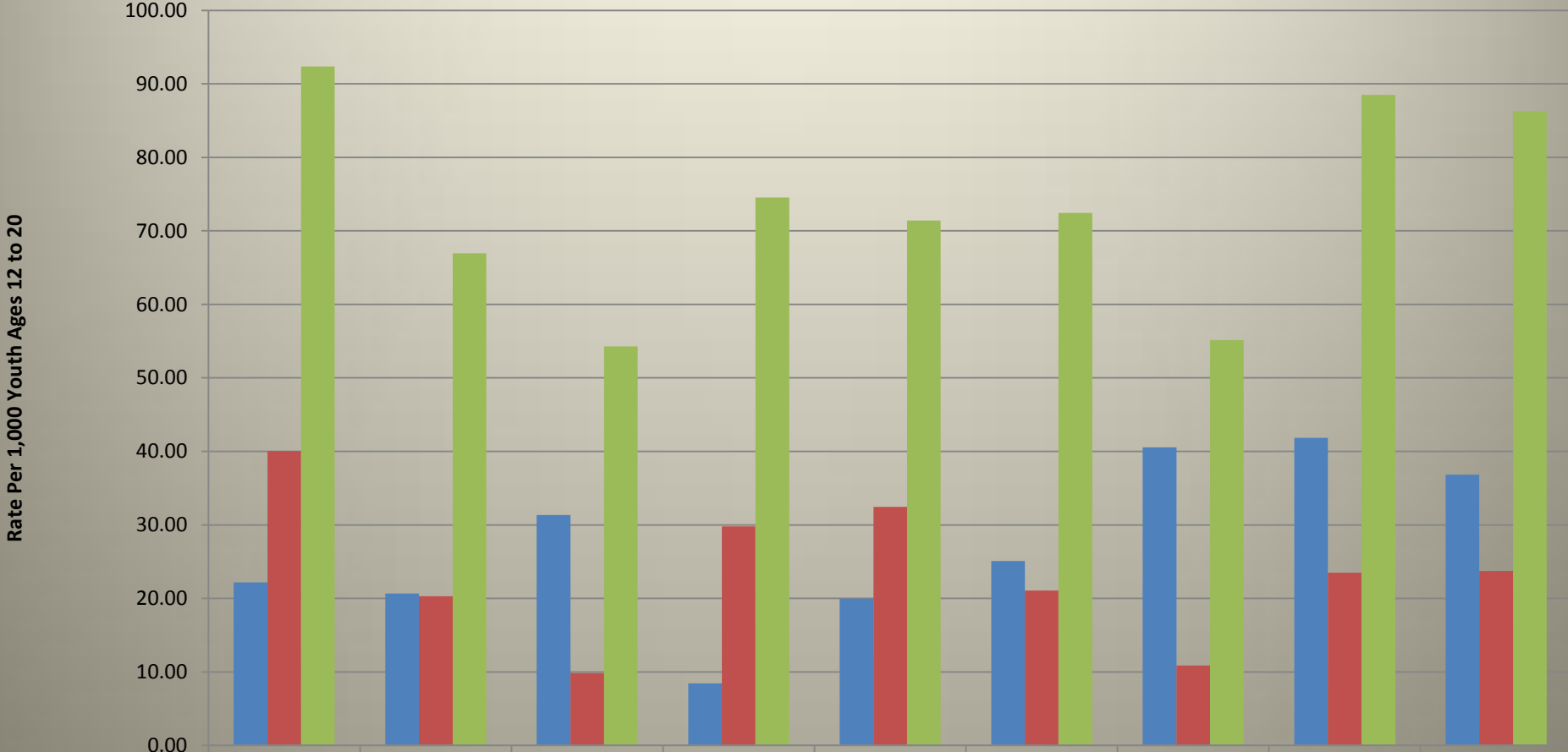


Moffat	45%	48%	42%	44%	46%
Rio Blanco	54%	54%	50%	45%	50%
Routt	61%	61%	64%	69%	67%

YVP July 2011

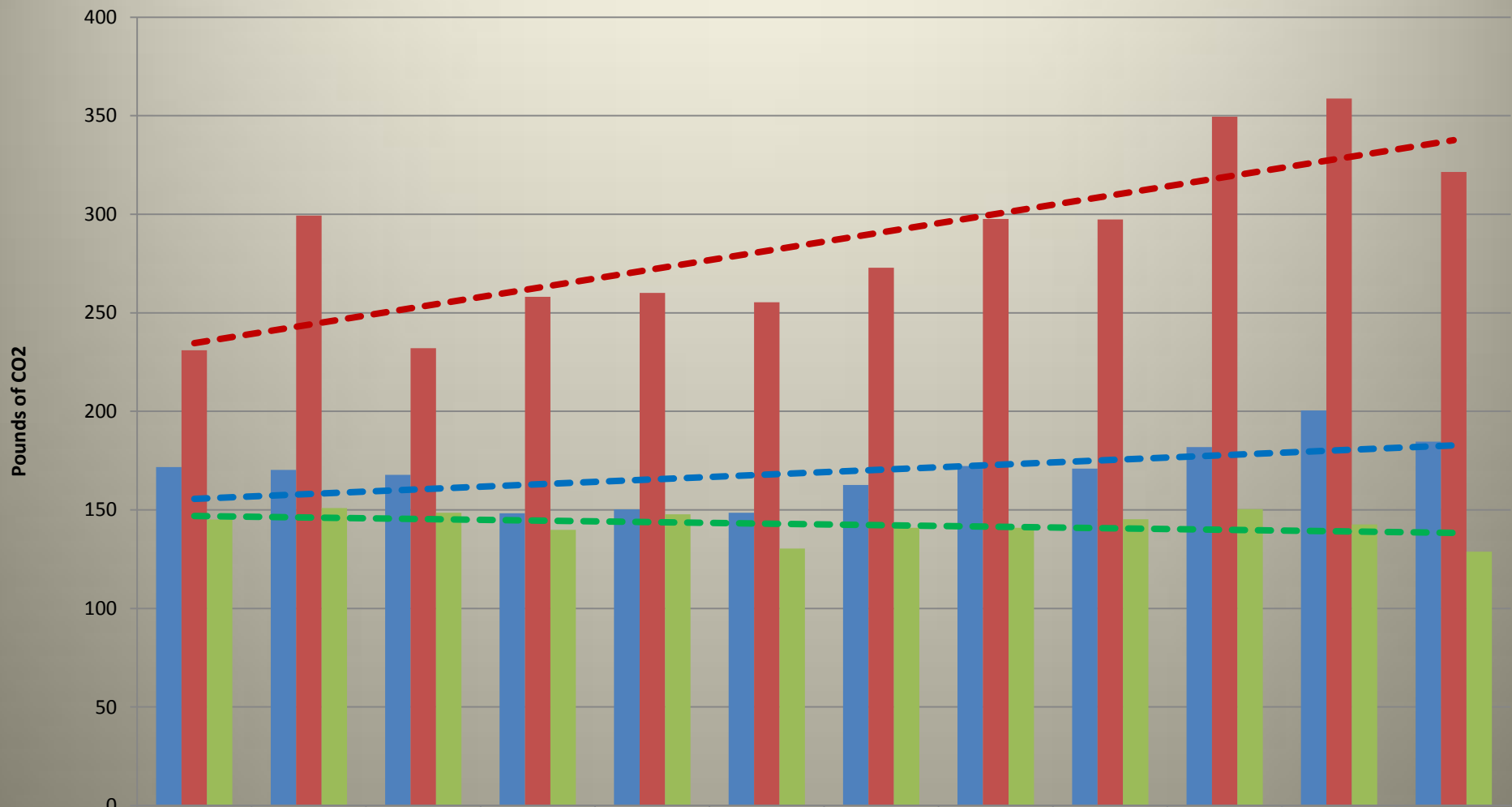
Northwest Colorado Counties Under Age Drinking Violations

Per 1,000 of Youths between the ages of 12 to 20



	FY 2002	FY 2003	FY 2004	FY 2005	FY 2006	FY 2007	FY 2008	FY 2009	FY 2010
Moffat County	22.16	20.65	31.36	8.45	19.98	25.09	40.57	41.83	36.82
Rio Blanco County	40.04	20.30	9.84	29.82	32.44	21.08	10.87	23.51	23.72
Routt County	92.39	66.97	54.29	74.53	71.40	72.45	55.13	88.50	86.26

Daily Pounds of CO2 Per Capita Produced by Vehicle Traffic in the County



	1998	1999	2000	2001	2002	2003	2004	2005	2006	2007	2008	2009
Moffat	171.7	170.3	167.8	148.3	150.3	148.6	162.7	172.3	171.0	181.9	200.5	184.6
Rio Blanco	230.9	299.4	232.1	258.1	260.1	255.3	272.8	297.6	297.4	349.5	358.8	321.4
Routt	145.1	151.0	148.6	139.9	147.7	130.4	141.0	141.0	145.3	150.4	142.6	128.9

In Conclusion

- Land Use
- Population & Per Capita Income
- Housing
- Economic Diversity
- Potential Workforce Shortage
- Business Size
- Education and Health
- Environmental

